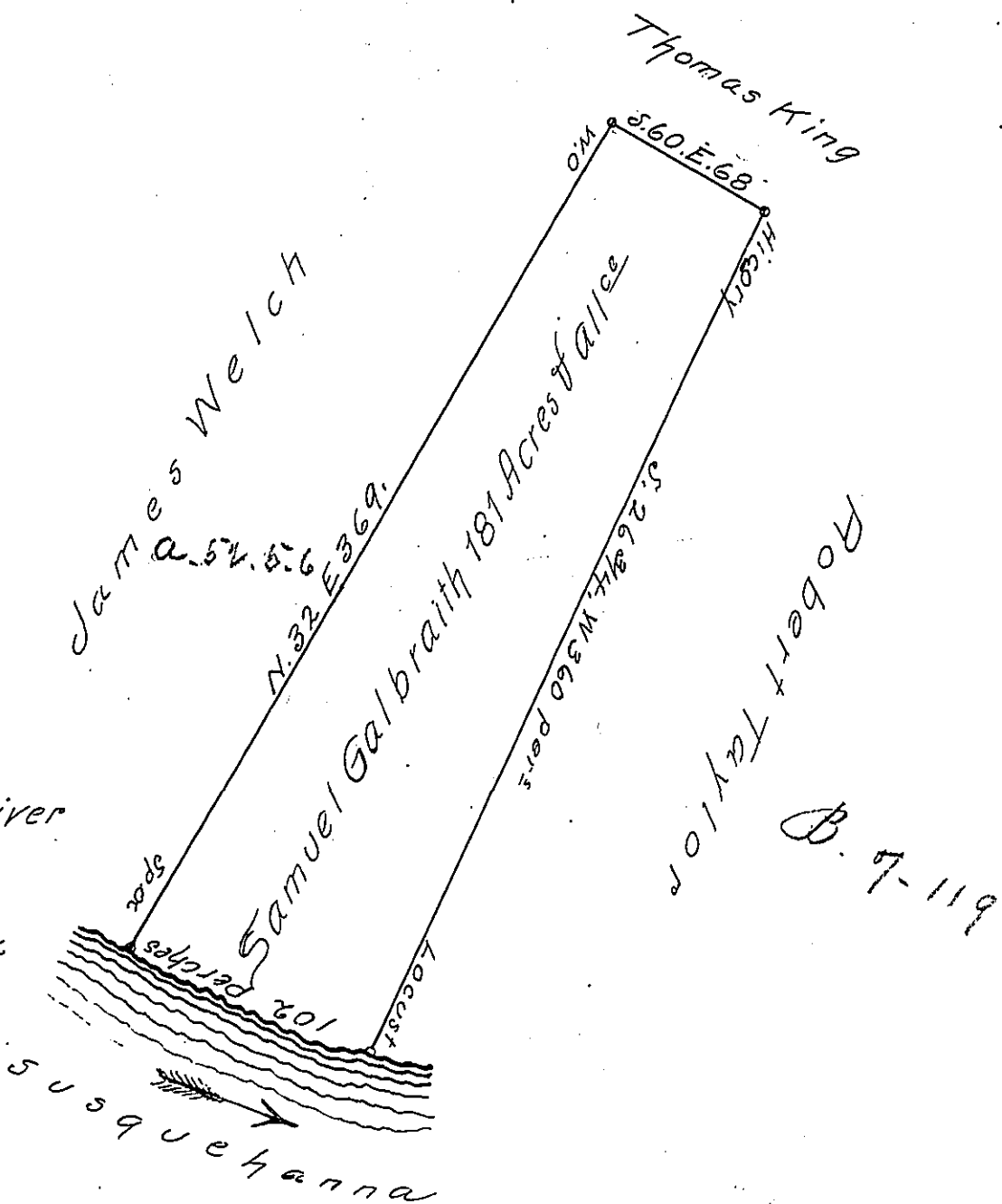


Courses & Dist^s up River
 N. 75 W. 22
 N 63 W. 80 to Sp. α
 102



A Draught of Samuel Galbraith's land situate in Paxton Township in the County of Lancaster containing one hundred and eighty one Acres and an allowance of six Acres per cent for roads and Highways. By virtue of the honorable the Proprietaries Warrant dated the Fourteenth day of November A.D. 1748 and Surveyed the 30th October 1753

To Nicholas Scull (Signed) William Galbreath D.S.
 Surveyor General

I do certify the above to be a correct Copy of a Draft of a tract of Land situate now in Swatara Township Dauphin County remaining filed in my Office December 9th 1813

Richard T. Leech Esquire Thomas Smith
 Surveyor Gen^l. Pa.

IN TESTIMONY that the above is a copy of the original remaining on file in the Department of Internal Affairs of Pennsylvania, made conformably to an Act of Assembly approved the 16th day of February, 1833, I have hereunto set my Hand and caused the Seal of said Department to be affixed at Harrisburg, this twelfth day of December 1904

Loac J. Brown
 Secretary of Internal Affairs